



OPERATION MANUAL

PALLET TRUCK

TRP0003 - TRP0004

TOTALSOURCE®

TABLE OF CONTENTS

1. FOREWORD	4
2. CORRECT APPLICATION	5
3. GENERAL SPECIFICATIONS	5
4. ASSEMBLY OF THE TILLER HANDLE	6
5. ADJUSTING THE RELEASE MECHANISM	8
6. MAINTENANCE	10
6.1. Oil	11
6.2. How to bleed air from the pump unit	11
6.3. Daily check and maintenance	11
6.4. Lubrication	11
6.5. Adding hydraulic oil to the pump reservoir	12
7. WARNING AND SAFETY INSTRUCTIONS	12
8. TROUBLESHOOTING	14

1. FOREWORD

NOTE: Operator **MUST** read and understand these operating instructions before using this Pallet Truck.

ATTENTION:

- The waste packages should be sorted and put into the solid dustbin according to the materials, and be collected by local special environment-protection bureau. To avoid pollution, it's forbidden to throw away the wastes randomly.
- To avoid leaking during the use of the products, the user should prepare some absorbent material (scraps of wood or dry duster cloth) to absorb the leaking oil in time. To avoid the second pollution to the environment, the used absorbent materials should be handed in to the special department in term of the local statute.

Thank you for choosing our pallet truck. For your safety and correct operation, please read this instruction manual.

NOTE: All of the Information reported herein is based on data available at the time of printing. The factory reserves the right to modify its own products at any time without notice or incurring in any sanction. Please verify with the factory for possible updates.

2. CORRECT APPLICATION

This truck is a manually operated Pallet Truck designed to lift and transport the rated load on industrial pallets. Do not lift or carry persons and don't use this truck for other purposes than its intended use. A wrong usage can cause human injuries or can damage equipment.

The operator/operating company has to ensure the correct usage and has to ensure that this truck is used only by staff, which is trained and authorized to use this truck.

The truck has to be used on substantially firm, smooth, level and prepared surfaces. Driving with the load on slopes is not allowed. The load must be placed approximately on the longitudinal centre plane of the table and must be in satisfactory condition.

The capacity is marked on the identification plate and depending on the version possibly additionally on the capacity sticker. The operator has to consider the warnings and safety instructions.

The Pallet Truck is intended to be used for indoor applications with ambient temperatures between 5 °C and 40 °C.

No modifications or alterations to this Pallet Truck which may affect stability or safety requirements of the truck, shall be made without the prior written approval of the original truck manufacturer, its authorized representative, or a successor thereof. This includes changes affecting braking, steering, for example capacity, visibility and the addition of removable attachments. When the manufacturer or its successor approve a modification or alteration, they shall also make and approve appropriate changes to capacity plate, decals, tags and operation and maintenance handbooks. By not observing these instructions, the warranty becomes void.

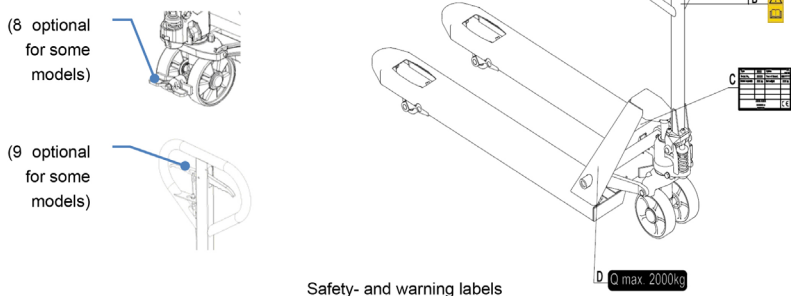
3. GENERAL SPECIFICATIONS

Capacity (kg)	2000/2500/3000
Max fork height (mm)	200
Min fork height (mm)	85
Fork length (mm)	800/1000/1150/1500/1800/2000/2500
Width overall forks (mm)	540/685
Individual fork width (mm)	160
Load wheel Diameter (mm)	80 mm nylon, polyurethane
Steering wheel Diameter (mm)	200 mm nylon, polyurethane, rubber

Materials and specification are subject to change without notice.

Description of safety devices and warning labels.

c. Description of the safety devices and warning labels

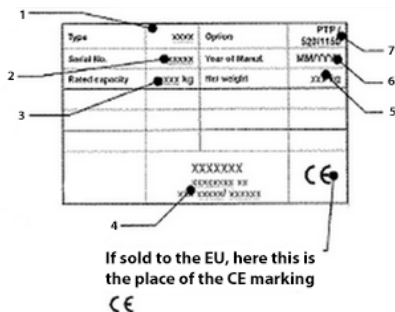


- A. Operating instruction sticker
- B. Sticker to read this instruction
- C. Identification plate (ID- plate)
- D. Capacity sticker
(both sides/ sample, for illustration only, capacity might be different for your type)
- (8) Parking-/ Footbrake (Option)
- (9) Progressive parking and drive brake, lever with drum brake(Optional)

The safety and warning labels should be placed according to figure 3. The advices on the truck are additional to this handbook. Please follow the operating instructions. If the decals are damaged or missing, please replace them. Your truck may be optionally equipped with a parking and drive brake.

Identification plate:

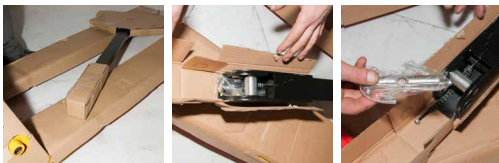
1. Designation, type
2. Serial No
3. Rated capacity
4. Name and address of the supplier
5. Net weight
6. Manufacturing date
7. Wheel combination, fork length, width over the forks



4. ASSEMBLY OF THE TILLER HANDLE

1. Remove the cardboard packaging from the lever.

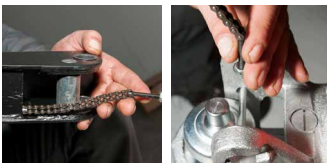
Attention: the axle for the installation of the lever is included in the lever



2. Take the lever, the axle and the split pin.



3. Insert the axle in the pump through the holes in the pump and through the holes of the lever from right to left.



4. Now secure the axle with the elastic pin.



5. Remove the safety bar on the pump.



6. Take the chain in the lever and run it through the hole of the axle.



7. Secure the chain to the lever of the lowering valve.



8. If the pump functions unsatisfactorily: loosen the nut and adjust by tightening or loosening the screw. After performing the adjustment, retighten the nut.

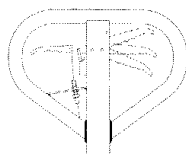


9. Ready for use!



5. ADJUSTING THE RELEASE MECHANISM

On the draw-bar of this pallet truck, you can find the control handle which can be regulated in three positions:



Lower
Neutral
Raise

Raise	Handle down
Neutral	Handle in centre position
Lower	Handle up, the lever moves back to the drive position when released

If however they have been changed, you can adjust according to following step:

- If the forks elevate while pumping in the neutral position, turn the adjusting nut on the adjusting bolt or adjusting screw clockwise until pumping action does not raise the forks and the neutral position functions properly.
- If the forks descend while pumping in the neutral position, turn the nut or adjusting screw counter-clockwise until the forks do not lower.
- If the forks do not descent when the control handle is in the lower position, turn the nut or adjusting screw clockwise until raising the control handle lowers the forks. Then check the neutral position to be sure the nut or adjusting screw is in the proper position.
- If the forks do not elevate while pumping in the raise position, turn the nut or adjusting screw counter-clockwise until the forks elevate while pumping in the raise position. Then check the lower and neutral position.

6. MAINTENANCE

Your pallet truck is largely maintenance-free.

6.1. Oil

Please check the oil level every six months. The oil capacity is about 0.3 litre. Restore the fluid level in the rubber reservoir to 5 mm below the top; this must be with the forks in the lowered position. Use the hydraulic type oil according to temperature scale below.

Temperature	Oil
-20°C ~ + 40°C	L-HV46 hydraulic oil

6.2. How to bleed air from the pump unit

Air may enter the hydraulic oil during transport or by pumping in the upright position. This can cause the forks not to elevate while pumping in the RAISE position. The air can be bled in the following way: place the control handle in the LOWER position, then move the handle up and down several times.

6.3. Daily check and maintenance

Daily check of the pallet truck can limit wear as much as possible. Special attention should be paid to the wheels and the axles, as thread, rags, etc may block the wheels.

The forks should be unloaded and lowered in the lowest position when the job is over.

6.4. Lubrication

Use motor oil or grease to lubricate all moveable parts.

6.5. Adding hydraulic oil to the pump reservoir

- Ensure forks are in lowered position
- Lay pallet truck on either side. Position drain plug of hydraulic cylinder up
- Remove the screw plug
- Add hydraulic oil until level of oil is at bottom of hole
- Replace drain plug, upright the truck

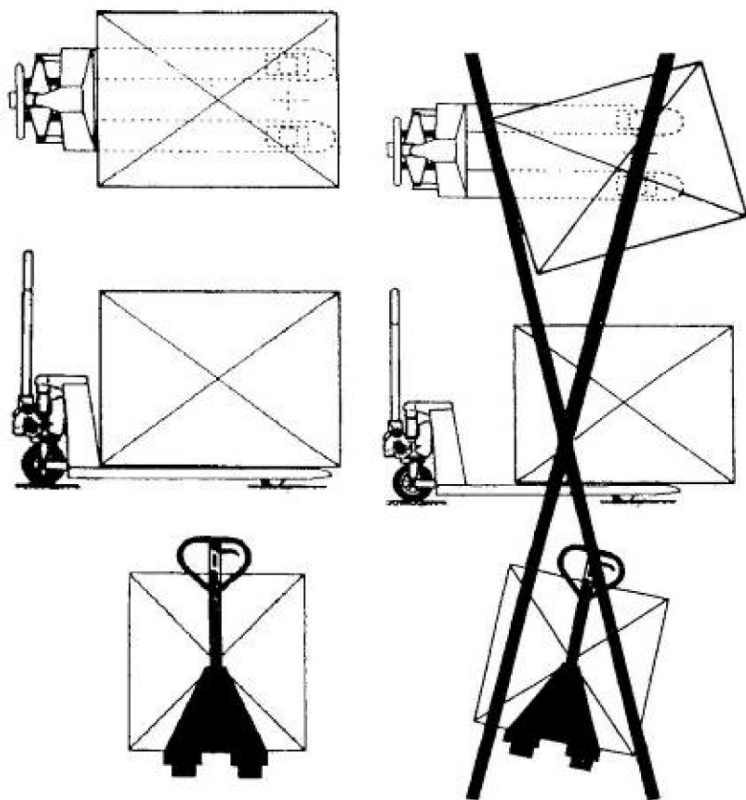
7. WARNING AND SAFETY INSTRUCTIONS

For safe operation of the Pallet Truck, please read all warning signs and instructions here and on the pallet truck prior to use.

- Do not operate the pallet truck unless you are familiar with it and have been trained or authorised to do so.
- Give special attention to the wheels, the tiller assembly, the forks, and the lowering controls.
- Do not use the truck on a slope.
- Never place any part of your body in the lifting mechanism or under the forks or load.
- Do not carry passengers.
- We advise that operators should wear gloves and safety shoes.
- Do not handle unstable or loosely stacked loads.
- Do not overload the truck.
- Always place loads centrally across the forks and not at the end of the forks (See Fig.2).
- The capacity of the truck assumes an evenly distributed load with the centre of the load being at the halfway point of the length of the forks.
- Make sure that length of the forks matches the length of the pallet. Lower the forks to the lowest height when the truck is not being used.
- In other specific conditions the operators should take extra care in operating the truck.

Per il sollevamento rapido del transpallet:

Se il carico pesa meno di 120 kg, il transpallet può utilizzare la funzione di sollevamento rapido. Ciò consente di sollevare le forche dall'altezza minima all'altezza massima con circa 5 corse della maniglia timone. Se il carico pesa più di 120 kg, la funzione pompa passa automaticamente alla velocità di sollevamento normale.



8. TROUBLESHOOTING

N°	Problem	Cause	Action
1	The forks can't be raised up to the max height	<ul style="list-style-type: none"> The hydraulic oil is not enough 	<ul style="list-style-type: none"> Add hydraulic oil
2	The forks can't be raised	<ul style="list-style-type: none"> No hydraulic oil in the reservoir The oil contains impurities The nut or screw were tightened too much, keeping the pumping valve open Air enters the hydraulic oil 	<ul style="list-style-type: none"> Fill the oil reservoir Change the oil Adjust the nut or the screw Bleed the air
3	The forks can't be lowered	<ul style="list-style-type: none"> The piston rod or pump body is deformed due to partial loading slanting to one side or overloading The forks were kept in their highest position for long time with the piston rod exposed, resulting in rust and causing the rod to jam The adjusting nut or screw is not in the correct position 	<ul style="list-style-type: none"> Replace the piston rod or pump body Keep the forks in the lowest position when not in use, and pay more attention to the lubrication of the rod Adjust the nut or the screw
4	Leaks	<ul style="list-style-type: none"> Sealing parts worn or damaged Some part are cracked or slightly worn 	<ul style="list-style-type: none"> Replace the parts Replace the parts
5	The forks descend without the release valve being operated	<ul style="list-style-type: none"> The impurities in the oil prevent the release valve from closing properly Some parts of the hydraulic system are cracked or worn Air enters the hydraulic oil Sealing parts worn or damaged The adjusting nut or screw is not in the correct position 	<ul style="list-style-type: none"> Replace with new oil Inspect and replace the worn parts Bleed the air Replace the parts Adjust the nut or the screw

NOTE: Do not attempt to repair the pallet truck unless you are trained and authorized to do so..

TOTALSOURCE[®]

Your distributor:



Manufactured outside the EU for:



TVH PARTS NV

Brabantstraat 15 · 8790 Waregem · Belgium

T +32 56 43 42 11 · F +32 56 43 44 88 · info@tvh.com · www.tvh.com